

Corpo in ACCIAIO INOX CF8 - Connessioni Filettate BSP F/F
Sede di tenuta in FKM - Funzione SE Normalmente Chiusa o DE Doppio Effetto

STAINLESS STEEL CF8 body - Threaded BSP F/F Connections
FKM seal - SR Spring Return Normally Closed or DA Double Acting



Vantaggi

- Design compatto
- Facile da usare con varie possibilità di posizionamento
- Velocità di azionamento e lunga durata

Valvole per aria, vuoto, acqua, fluidi neutri o leggermente corrosivi

Benefits

- Compact design
- Easy to use with many possible mounting position
- Fast operation and long lasting life

Valves for air, vacuum, water, neutral or light corrosive fluids

CARATTERISTICHE TECNICHE - TECHNICAL FEATURES

Corpo - Valve Body

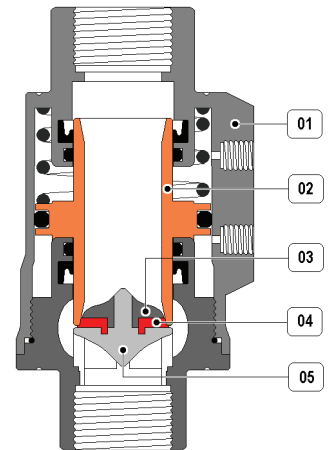
Attacchi Connections	Terminali Filettati Threaded Ports	G 3/8" ... G 2" G 3/8" ... G 2"
Pressione di Esercizio Working Pressure	16 bar	Vuoto 740 mm Hg Vacuum 740 mm Hg
Temperatura Fluido Fluid Temperature	-20 ... +150 °C -20 ... +130 °C	sede di tenuta FKM - FKM seal sede di tenuta EPDM - EPDM seal
Temperatura Ambiente Ambient Temperature	-20 ... +80 °C	per tutti i modelli for all types

Attuatore - Actuator

Pressione di Comando Control Pressure	3 ... 8 bar (max.)	per tutti i modelli for all types
Fluido di Comando Pilot Media	Aria Secca o Lubrificata Dry or Lubricated Air	
Connessione Pilota Pilot Connection	G 1/8"	(mm2 per tutti i modelli for all types/sec)
Viscosità Fluido Fluid Viscosity	500 Cst max.	(mm2/sec)
Accessori Opzionali Optional Equipments	Elettrovalvola Namur Namur Solenoid Valve	

Materiali - Materials

Corpo - Valve Body	01	Aisi 304 Acciaio Inox / St. Steel - Aisi 316 (opzione / option) ASME SA351/351M Grade CF8)
Spola - Shuttle	02	Aisi 304 Acciaio Inox / St. Steel - Aisi 316 (opzione / option)
Ghiera - Seat Nut	03	Aisi 304 Acciaio Inox / St. Steel - Aisi 316 (opzione / option)
Tenuta - Seals	04	FKM / EPDM
Sede - Seat	05	Aisi 304 Acciaio Inox / St. Steel - Aisi 316 (opzione / option)

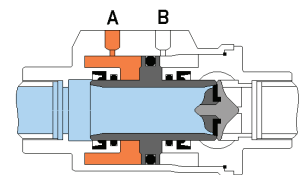


Fluidi - Fluids

Valvola idonea per fluidi compatibili con le parti a contatto. La scelta dei materiali è responsabilità del cliente che dovrà assicurarsi se adatti all'impiego. La scelta è limitata dai dati di temperatura e pressione della valvola. The valve is suitable for fluids compatible with the parts in contact. The user is responsible for the right choice of compatibility with knowledge of the real working conditions. The choice of the valve must also consider the conditions of temperature and pressure.

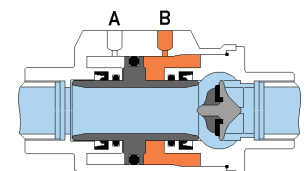
Valvola Chiusa Closed Valve

Dando aria nel foro A (B in scarico), alla fine della corsa, il pistone preme contro la guarnizione di tenuta chiudendo il passaggio del fluido. Nella versione NC, la molla è inserita nella camera A e, in mancanza di comando, mantiene la valvola nella posizione chiusa. Supplying the hole A with air (B must be discharging), at the end of its stroke, the piston presses on the seat seal. The valve is closed. As in spring return NC execution, the spring is in A, if there is no control, the piston will touch the seat seal therefore, the preferable position is the closed one.



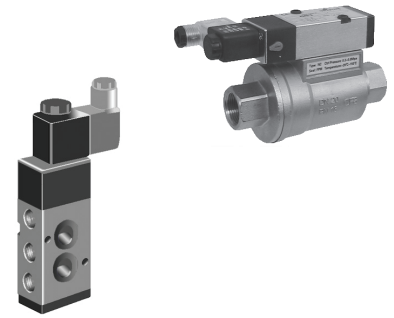
Valvola Aperta Opened Valve

Immettendo aria nel foro B (A in scarico), il pistone si sposta dalla sede e la valvola si apre. Supplying the hole B with air (A must be discharging), the piston will be away from the seat seal. The valve is open.



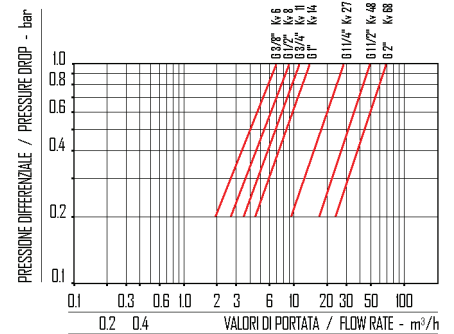
FUNZIONE NC - NC FUNCTION

Attacchi Filettati Threaded Ports	Diametro Nominale Nominal Diameter	Fattore Flusso Flow Factor	Pressione Comando Control Pressure	Pressione Esercizio Working Pressure	Riferimento Codice Reference Code
G	Ø	m³/h	bar (min)	bar (max)	Tipo / Type
3/8"	13,0	6,0	5,0	16,0	260• 314
1/2"	13,0	8,0	5,0	16,0	260• 414
3/4"	18,0	11,0	5,0	16,0	260• 514
1"	24,0	14,0	5,0	16,0	260• 614
1 1/4"	31,0	27,0	5,0	16,0	260• 714
1 1/2"	35,0	48,0	5,0	16,0	260• 814
2"	45,0	68,0	5,0	16,0	260• 914



FUNZIONE DE - DA FUNCTION

Attacchi Filettati Threaded Ports	Diametro Nominale Nominal Diameter	Fattore Flusso Flow Factor	Pressione Comando Control Pressure	Pressione Esercizio Working Pressure	Riferimento Codice Reference Code
G	Ø	m³/h	bar (min)	bar (max)	Tipo / Type
3/8"	13,0	6,0	5,0	16,0	260• 304
1/2"	13,0	8,0	5,0	16,0	260• 404
3/4"	18,0	11,0	5,0	16,0	260• 504
1"	24,0	14,0	5,0	16,0	260• 604
1 1/4"	31,0	27,0	5,0	16,0	260• 704
1 1/2"	35,0	48,0	5,0	16,0	260• 804
2"	45,0	68,0	5,0	16,0	260• 904

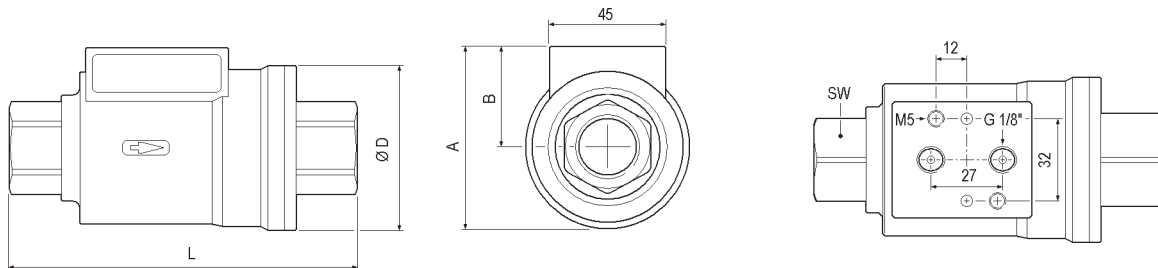


sostituire il digit • con il materiale desiderato della sede
0→FKM Viton
3→EPDM

please replace digit by desired seat material
0→FKM Viton
3→EPDM

DIMENSIONI - DIMENSIONS (mm)

ATTACCHI PORT SIZE G	Ø DN	DIMENSIONI - DIMENSIONS					PESO - WEIGHT	
		A	ØD	B	L	SW	Kg.	
3/8"	10	56	46	33	98	22	0,80	
1/2"	15	61	52	35	112	26,5	1,00	
3/4"	20	72	64	40	135	32	1,50	
1"	25	78	69	43	143	41	1,92	
1 1/4"	32	94	86	51	165	50	3,06	
1 1/2"	40	104	96	56	180	56	3,76	
2"	50	116	108	62	207	70	5,71	



Accessori - Opzioni
Accessories - Options

Elettrovalvole Namur 561
Namur Solendid Valve 561

ATEX Versione ATEX a richiesta
Atex version upon request